

AIRREX AIR CONDITIONER

Operating Instruction & Parts Manual

Model : HSC-1370

Please read and save these instructions. Read carefully before attempting to assemble, install, operate or maintain the product described. Protect yourself and others by observing all safety information. Failure to comply with instructions could result in personal injury and/or property damage! Retain instructions for future reference.

- ▶ Thank you for purchasing an AIRREX AIR CONDITIONER. Before operation please read this user's manual carefully.
- ▶ Keep this manual readily available.
- ▶ It is essential that you read it carefully before use, and follow it at all times.
- ▶ The Air Conditioners are specified for use on a 230V~ 50Hz 1ph for model HSC-1370. You must check that the local electricity supply is the same and have the appropriate plug fitted by a qualified electrician.
- ▶ Please complete the warranty form now and keep in a safe place.
- ▶ We have a policy of continual improving to our products. The contents (features and specifications) in this manual are therefore subject to change without notice.

Description

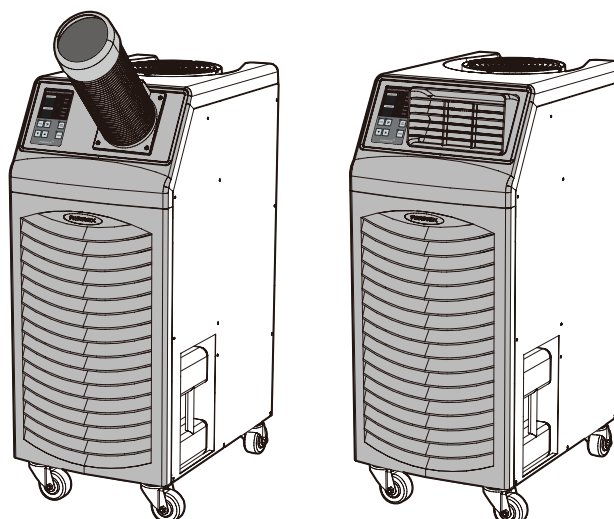
Airrex air conditioners operate in air temperatures from 25°C to 45°C. These air conditioners utilize eco-friendly R-410A refrigerant. Airrex air conditioners may require a fresh air supply for proper operation.

Includes removable, washable air filters for easy maintenance. Thermostatically protected compressor includes low pressure warnings. Moves easily on (4) swivel casters (2 locking).

Air conditioners feature (1) ø125 diameter front cold air discharge and a ø250 diameter top warm air discharge.

Unpacking

After unpacking the unit, carefully inspect the unit for any damage that may have occurred during transit, such as any loose, missing, or damaged parts. If damaged, immediately file a claim with the carrier.



DUCT TYPE

GRILL TYPE

SPECIFICATIONS

HSC-1370		
Cooling Capacity	Btu/h kW	13000 (3.8)
Power Supply		230V~ 50Hz 1Ph
Dimensions (WxDxH)	mm	420 X 620 X 1020
Weight	kg	57
Power Consumption	kW	1.62
Current Consumption	Amp.	7.5
Air Flow Evaporator	m ³ /min	8
Air Flow Condenser	m ³ /min	14
Refrigerant(R-410A)	g	650
Air Filter		Polyester Filter
Safety Devices		<ul style="list-style-type: none"> ▶ Fan motor protection ▶ Tank position indicator ▶ 3 min. delay timer ▶ Thermostat and relief valve for compressor ▶ Low Pressure Switch ▶ Auto 'Full Tank' shut off
Power Cable	Type	Plug
	Length	3m
Operating Range		25°C DB 60% RH ~ 45°C DB 40% RH
Low Pressure	MPa	1.27
Max. Duct Length		9m (Duct Type Only)
Fuse in power box in Machine body		250V~, 5A

GENERAL SAFETY INFORMATION

- * Ensure the safety of the location in which cooler is to be used.
- * Ensure you allow at least 20cm air space all around the cooler.
- * Never use the cooler at more than 2°incline.
- * Ensure the floor or ground is smooth and sound.
- * When in position LOCK the casters to prevent rolling.

FOR MAXIMUM EFFICIENCY

- * In airtight areas use vertical exhaust into ceiling.
- * If possible locate exhaust outlet through a window or door to outside.
- * Ensure correct electricity supply.

DUCT INSTALLATION

- * The duct should be established before using.
(Standard Duct Size : 500mm, ø125 dia.)

The following instructions are for ensuring the user's safety and to prevent any physical injury or material damage. Please read carefully and follow all instructions. There are two sections to these instructions: **WARNING** and **CAUTION**.

WARNING

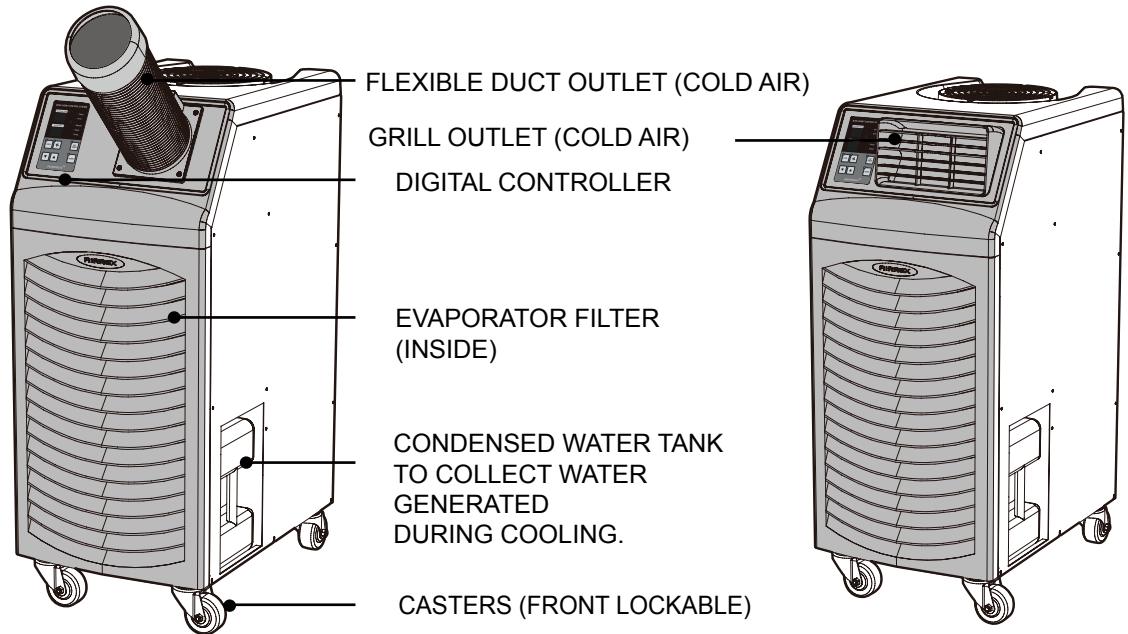
- * Use a 230V~ 50Hz 1 Phase power supply only.
(Wrong supply may cause a fire and / or shock hazard)
- * Securely plug into a grounded outlet. (Unless earthed, may cause electric shock)
- * Do not use a damaged power cable, plug or socket. (Short, fire or shock hazard)
- * Do not remove plug by pulling cable or with wet hands. (Risk of fire and electric shock)
- * Before cleaning, remove plug from socket. (Otherwise risk of electric shock)
- * Do not place anything on top of the machine.
(This could cause electric shock, malfunction or injury)
- * Do not use an extension cord. (Risk of fire and / or electric shock)
- * Do not 'kink' or sharply bend the power cable nor put any weight on it.
(The insulation may be damaged causing fire and/ or electric shock)
- * Do not turn off by removing power plug. Always turn off at control panel first.
(Risk of electric shock and / or malfunction)
- * Do not use this cooler on unstable or inclined surfaces. Always use on solid flat floor. (Risk of falling causing injury, fire or malfunction)
- * A damaged power supply cable must be replaced with a new power supply cord obtained from the product manufacturer and not repaired.

CAUTION

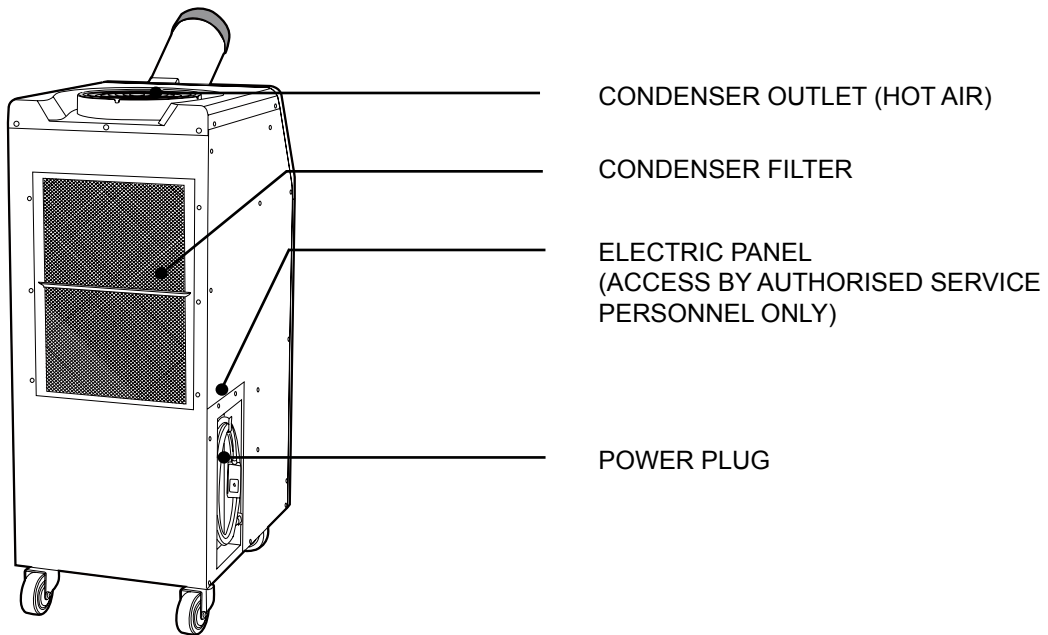
- * Do not place cooler on uneven, unstable or inclined surface.
(This could cause malfunction)
- * When storing the cooler, ensure that it is kept in a dry, cool place.
(To prevent corrosion and malfunction)
- * If not being used for some time or if lightening is present, always unplug from power. (To prevent risk of electric shock, short circuit or fire)
- * Do not spray water on to the cooler nor use solvents such as benzene, thinner or alcohol for cleaning. (There is a risk of electric shock and / or short circuit)
- * Designed for indoor usage.

ASSEMBLY

FRONT and RIGHT SIDE VIEW



BACK and LEFT SIDE VIEW



INSTALLATION

WARNINGS REGARDING PROPER LOCATION FOR INSTALLATION



Do not use the unit in explosive environments or in areas where flammable gas leakage may occur.

Do not use the unit in areas where it will be exposed to rain or water.

Do not use the unit in a corrosive atmosphere.

Do not install the unit on uneven or sloping surface. The unit may roll or topple over even if the casters are set to the locked position.

MOVING THE UNIT

Unlock the casters and push the unit to a flat, level surface and set the caster brakes to the locked position.

PLUGGING IN THE UNIT

Check the prongs and surface of the power cord plug for dust/dirt. If dust and/or dirt are present, wipe off with a clean, dry cloth.

Check the power cord, plug and prongs for damage or excess play.

If any damage or excess play is found, contact a qualified repair technician or a qualified electrician to perform replacement or repair of the power cord, plug or prongs



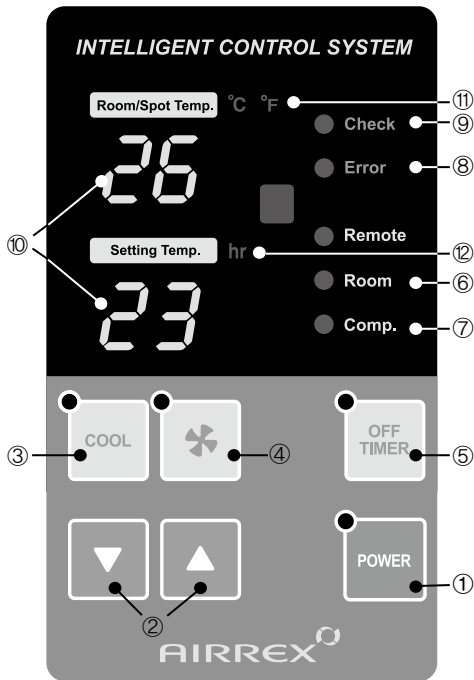
If the power cord or plug is damaged, repair should only be performed by qualified electrical personnel.



Do not connect/disconnect the power cord or attempt to operate buttons with wet hands. This could result in electrical shock.

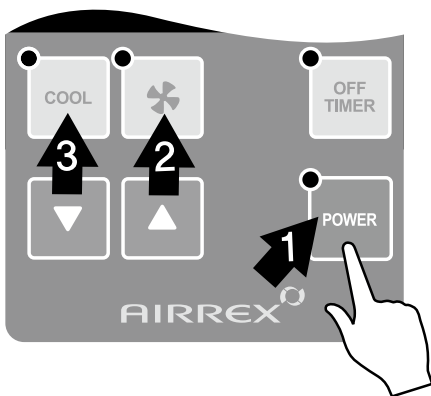
OPERATION

CONTROL PANEL



- ① **Power** : Use to power On / Off.
- ② **▼▲** : Raises or lowers setting temperature and/ or sleep (off) time.
- ③ **Cool** : Use to select cooling mode.
- ④ **Fan Speed** : Controls fan low/high speed.
- ⑤ **Off Timer** : To set the length of operating time, once turned on, that you wish the cooler to run for. You can set 0~24 hours. Time intervals are 30mins. up to 10 hours and then 1 hour between 10 and 24 hours.
- ⑥ **Room** : If the LED is On, the displayed temperature is for Room temp.
If the LED is Off, the displayed temperature is for spot temp.
- ⑦ **Comp.** : When the compressor is operating, the LED is On.
- ⑧ **Error** : Error signal
(E2 : Low Pressure, E3 : Sensor, E5 : BLDC Motor, AF: Eva Freezing)
- ⑨ **Check** : If Water full or Align Drain Tank is checking. The LED is on.
- ⑩ **Display** : Display Room/Spot temperature, the setting temp and off time in case of setting them.
(Display of 'LO' : under the 0°C, Display of 'HI' : over the 50°C)
- ⑪ **°C, °F** : When the user change temperature unit °C ↔ °F, °C or °F will be turn on.
- ⑫ **hr** : When the user set the off timer, 'hr' will be turned on.

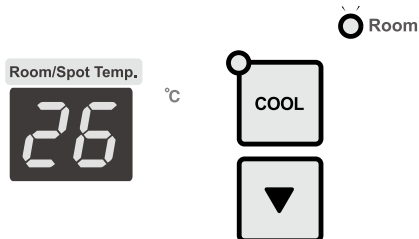
RUNNING & STOP



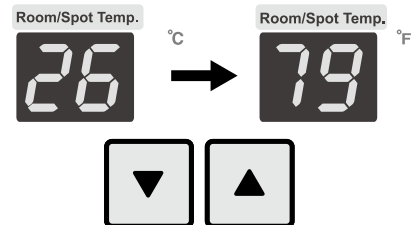
- 1. START BY PRESSING THE 'POWER' BUTTON.**
 - Cooler will start up automatically.
 - To STOP the unit, press the 'POWER' button once again.
- 2. To change fan speed, press the "FAN" button.**
- 3. If you wish to operate on fan only, press the 'COOL' button. To resume cooling, press the 'COOL' button again.**
(Note : There is a 3 minute delay when switching functions to protect the compressor)

SELECTION of AREA/ROOM or SPOT COOLING

To reduce the temperature of the entire room select 'Area/Room'. For 'targeted' cooling of machinery, servers, or people etc. select 'Spot Cooling'.

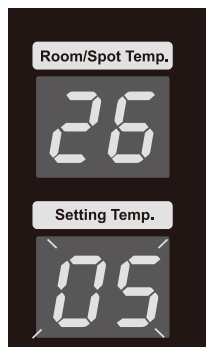


1. If you want to display room temperature, when air conditioner is operated, push cool and ▼ button simultaneously for three seconds. If you want to display spot cooling temperature, do the same to put it back.

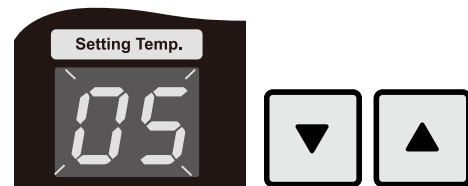


2. If you want to change temperature unit °F ↔ °C, when air conditioner is stopped, push ▼ and ▲ button simultaneously for three seconds.

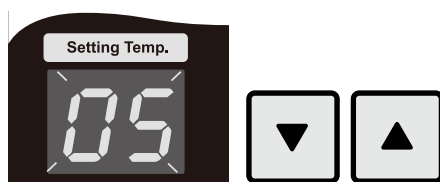
TEMPERATURE CONTROL OPERATION



1. When power is ON, the setting temperature is displayed. Default of setting temperature is as below.



2. When you push either ▼ or ▲ button, the setting temperature is changed.



3. The display showing the set temperature will blink 3 times.

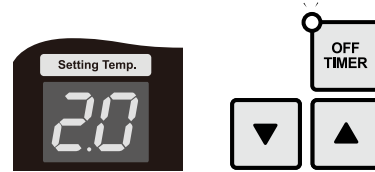
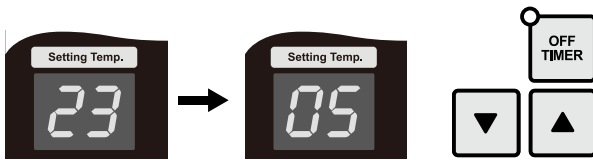
Mode	Display range	Setting range
Room Temp	0°C~50°C	1°C~30°C

Cooling operates when Room/Spot temperature is *higher than* set temperature.

Cooling stops when Room/Spot temperature is *lower than* set temperature.

HOW TO SET THE 'OFF TIMER'

This function enables you to set the length of time you want the cooler to operate. You can set the time period from 30min. to 24 hours in 30min. and 1 hour increments.



OFF TIMER LAMP IS ON

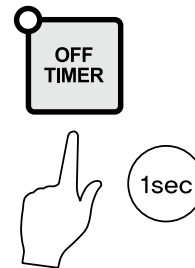
1. When cooler is operating, press the 'Off Timer' button and set the length of time you want by pressing ▲ or ▼. Each time you press the button you will increase the 'time to off' period by 30mins. up to 10 hours, and 1 hour thereafter up to 24 hours. The display will show .5 for 30min and 1 for an hour. e.g. One and a half hours will show 1.5.

2. When you have finished setting the time period, the 'Off Timer' lamp will be on which indicates the cooler is in sleep (Off Timer) mode.



AFTER 1hr

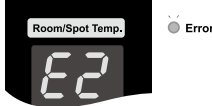
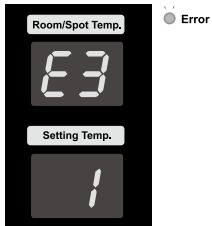
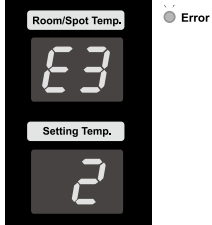
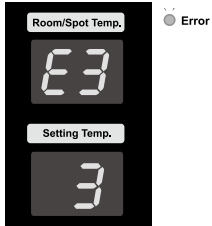
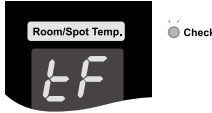
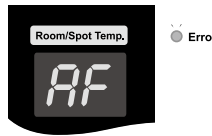


3. If you press the 'Off Timer' button during its operation, the remaining time will be shown.



4. To CANCEL timing, press and hold 'Off Timer' button for ONE second. It will then switch the timer off automatically.

SELF DIAGNOSTIC CODES

The alarm light is activated if abnormal operation occurs, and an error code is displayed on the control panel. In this case, the compressor will stop operating.

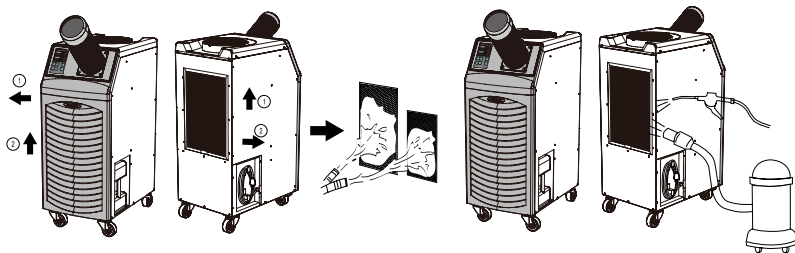
Error Code	Problem	Cause	Corrective Action
	Low pressure	Verify Electrical Refrigerant may be low	Clean Filters and Coils Verify Power (Voltage/Amps) Check Filters Evaporator/Condenser Check Evaporator/Condenser Coils Check refrigerant level and/or refrigerant leak.
	AF sensor	If the AF sensor is short circuited or cut 'E3&1' displayed and the 'Error' LED will be on.	Exchange temperature sensor
	RT sensor	If the RT sensor is short circuited or cut 'E3&2' displayed and the 'Error' LED will be on.	Exchange temperature sensor
	OT sensor	If the OT sensor is short circuited or cut 'E3&3' displayed and the 'Error' LED will be on.	Exchange temperature sensor
	Water full	Water tank is full	Empty the water tank
	Anti-Freezing alarm	Evaporator is below -4 °C due to being used in a low ambient temperature area.	Do not use the unit in an ambient temperature less than 22°C. Check refrigerant level.
	Align water tank	Water tank is not positioned correctly	Place the water tank in right position
	BLDC MOTOR	If BLDC MOTOR is not operated 'E5' displayed and the 'Error' led will be on.	Check BLDC MOTOR

TROUBLESHOOTING CHART

TROUBLE	CHECK	REMEDY
NOT WORKING	<ul style="list-style-type: none"> ● Power plug incorrectly connected ● POWER button "OFF" ● Fuse (supply) blown ● Breaker on switch board tripped ● Ambient temp. too high (over 45°C) 	<ul style="list-style-type: none"> ● Connect plug correctly ● Press POWER button to "ON" ● Replace fuse ● Check load capacity and reset ● Use only below 45°C
POOR COOLING	<ul style="list-style-type: none"> ● Filter blocked with dust ● Dust in heat exchanger ● Obstacle against inlet side ● Ambient temp. too high (over 45°C) 	<ul style="list-style-type: none"> ● Clean Filter ● Clean heat exchanger ● Remove and allow 51cm clearance ● Use only below 45°C

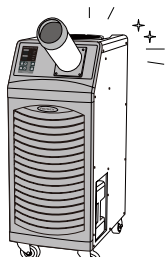
MAINTENANCE

CLEANING THE AIR FILTERS

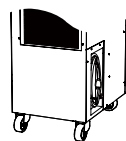


1. To remove EVA filters, open the front grille ① and pull the filter inside ②.
2. To remove COND filters, slide up a little ① and pull towards you ②.
3. Clean the filters with water or compressed air.
4. Clean evaporator and condenser units with a vacuum cleaner or compressed air.

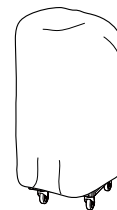
MAINTENANCE



1. After cleaning, completely dry the inside of the unit by operating on 'Fan Mode' for 3 to 4 hours.



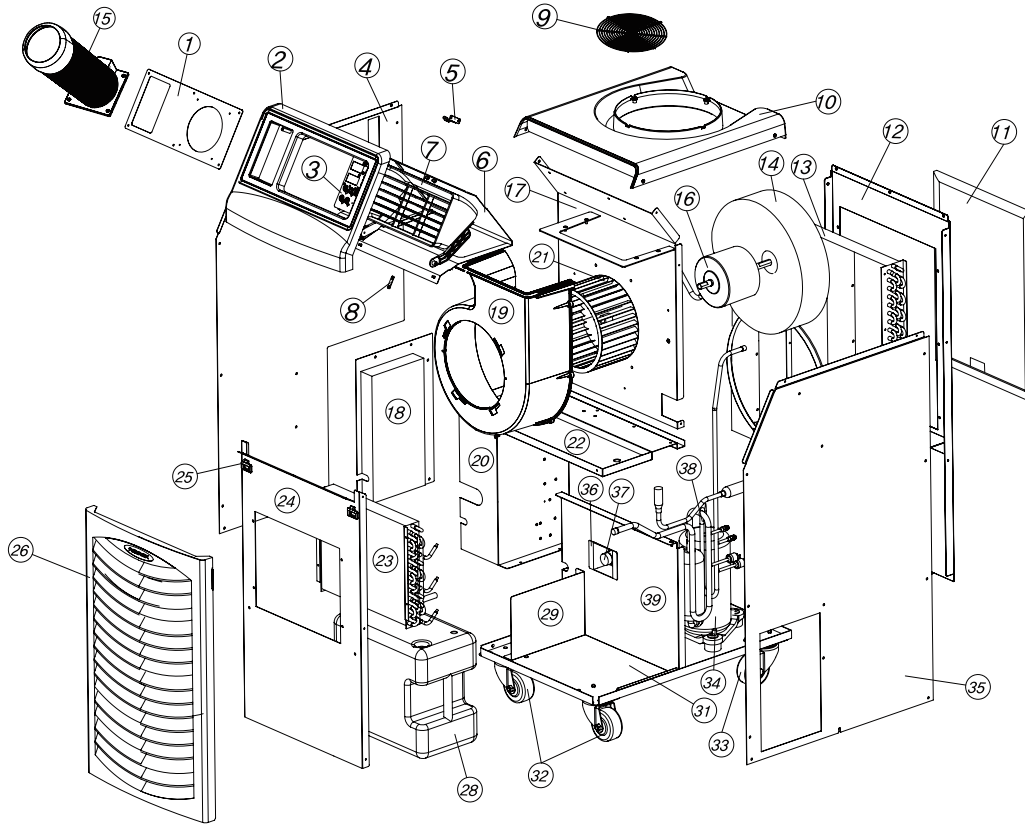
2. Turn "OFF" at control panel, remove plug from socket. Coil and store cable neatly.



3. Keep machine suitably covered to prevent damage by damp, humidity and dust.

ASSEMBLY DRAWING & PART LIST

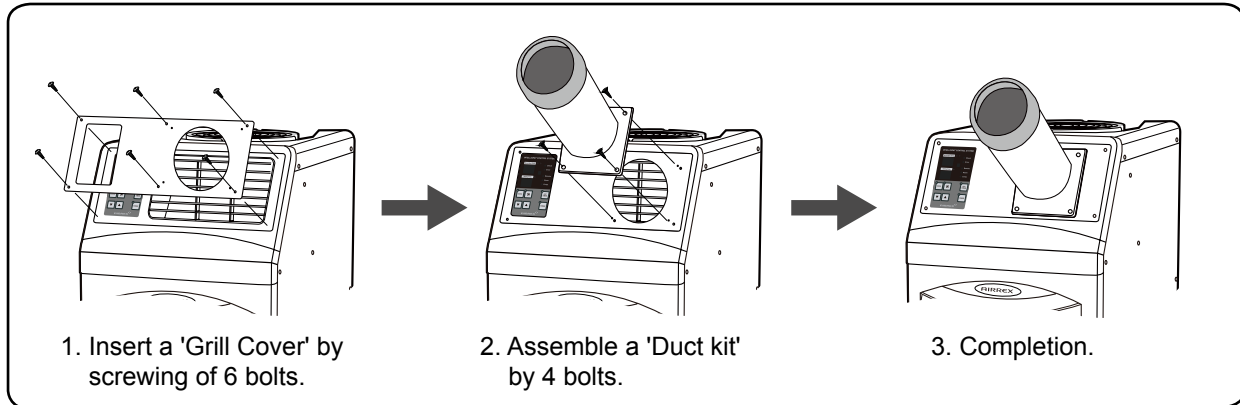
HSC-1370



No.	Parts Name
1	GRILL_COVER
2	FRONT_BEZEL
3	PCB_COVER_F
4	SIDE_COVER_L
5	LOCK_CLIP
6	PANEL_PARTITION_U
7	TP_GRILL
8	BRACKET_TILT_GRILL
9	GRILL_200
10	TOP_CASE
11	AIR_FILTER
12	REAR_BRACKET
13	EVA_FRONT
14	PROPELLA_FAN
15	5" Cold Air Nozzle
16	MOTOR
17	PANEL_PARTITION
18	PCB_COVER
19	DUCT_COVER

No.	Parts Name
20	CABI_PCB
21	IMPELLA
22	CABI_DRAIN_PANEL
23	HEAT_EXCHANGE
24	FRONT_BRACKET_UPPER
25	CLIP_SOCKET
26	PLASTIC_FRONT_GRILL
27	—
28	PLASTIC_WATER_BOX_1
29	BRACKET_WATERTANK_STOPPER
30	—
31	BASE
32	2.5_INCH_WHEEL
33	2.5_INCH_WHEEL_2
34	COMPRESSOR
35	SIDE_COVER_R
36	PANEL_PARTITION_L
37	PROXIMITY_CR30SCN15DNO
38	TUBE_EVAP

ASSEMBLY DRAWING - DUCT



memo.

memo.

memo.

memo.

WARRANTY

(Applicable to first retail purchaser only)

AIRREX AIR CONDITIONERS give more reliable performance, comfort and durability the more they are used. They are built under a strict quality assurance regime which includes inspection both during and after production and exhaustive reliability testing.

In the unlikely event you have any problems, please contact distributor. If the problem is as a result of a production fault or failure, repairs will be undertaken free of charge during the period of warranty subject to the following warranty conditions:

1. The warranty period is 12 months from the date of first purchase.
2. If the problem has been caused by customer error or misuse, abuse or damage, then all repairs will be charged for.
3. This warranty applies to your country.
4. Proof and date of purchase must be supplied.
5. Please complete the details below and keep this warranty in a safe place.
6. All transport charges back to the dealer are at the customers cost. Keep all original packaging to facilitate return. Return to customer will be at dealers cost (if genuine warranty claim).

DESCRIPTION	AIRREX AIR CONDITIONER		
MODEL	HSC-1370		
DATE OF PURCHASE		PRODUCT SERIAL NO:	

Warranty Period	() Months		
DISTRIBUTOR	Name of Company		
	Telephone No.		

CUSTOMER DETAILS	Name :
	Address :
	Telephone :

Manufactured by :
 (Juan-dong) 86, Gilpa-ro
 71beon-gil, Nam-gu,
 Incheon, Korea
 TEL : +82-32-509-5834
 FAX : +82-32-502-5519
 E-mail : airrex@hdtek.com
 Website : www.airrex.biz